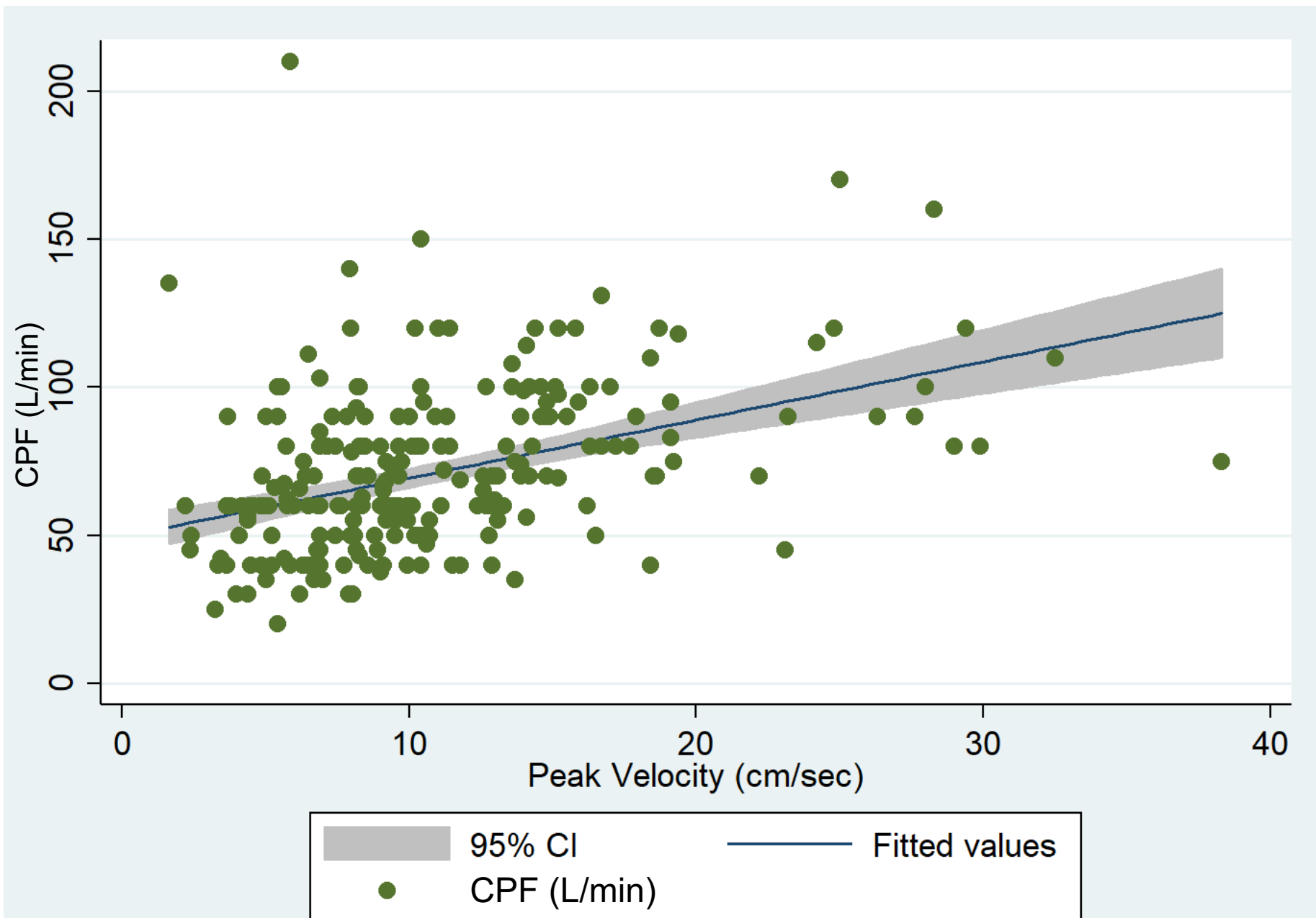


Simple linear regression line, with cough peak flow (CPF) as the dependent variable, in relation to passive cephalic excursion of diaphragm (PCED). Simple linear regression line showing a positive correlation between diaphragm excursion and CPF ( $P < 0.001$ ,  $\beta$  coefficient 11.9, 95% CI 9.28–14.5, adjusted  $R^2 = 0.243$ ).



Simple linear regression line, with cough peak flow (CPF) as the dependent variable, in relation to diaphragm velocity. Simple linear regression line showing a positive correlation between diaphragm velocity and CPF ( $P < 0.001$ ,  $\beta$  coefficient 1.97, 95% CI 1.44–2.49, adjusted  $R^2 = 0.175$ ).